

PART OF THE EAST 1/2 OF N.W. 1/4 OF N.W. 1/4 OF SEC. 33, T.6N., R.2W., S.L.B.&M.

104

VALLEY GREEN ESTATES

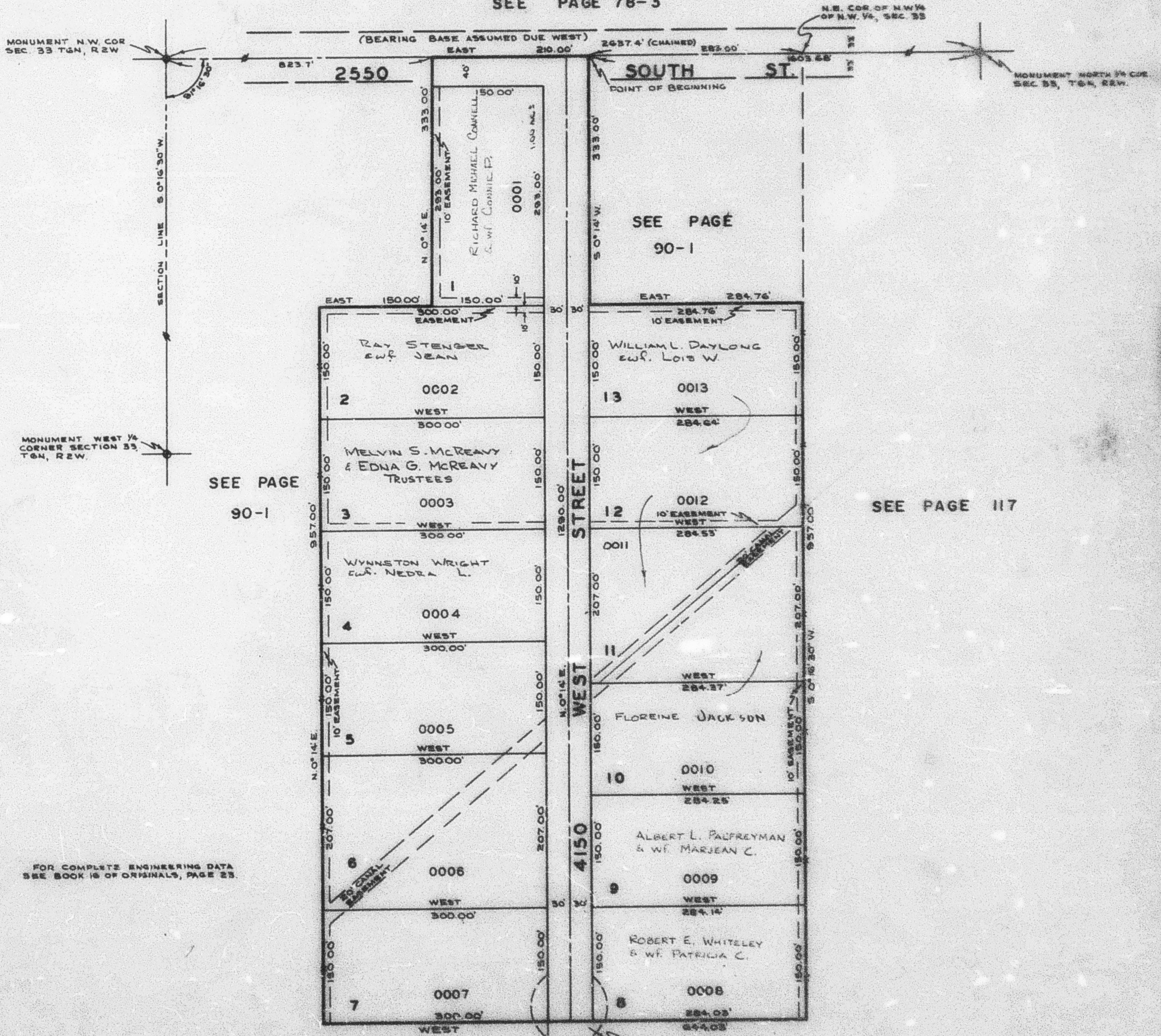
IN WEBER COUNTY

SCALE 1"=100'

TAXING UNIT: 53

PREFIX: 15-104

SEE PAGE 78-3



SEE PAGE 90-1

SEE PAGE 90-1

SEE PAGE 117

FOR COMPLETE ENGINEERING DATA SEE BOOK 18 OF ORIGINALS, PAGE 23.

EXCEPT WHERE OTHERWISE SHOWN, ALL LOTS WEST OF THIS LINE ARE OWNED BY:
DON LEVI ANDERSON
EUF. EDNA B.

EXCEPT WHERE OTHERWISE SHOWN, ALL LOTS EAST OF THIS LINE ARE OWNED BY:
J. NEWELL JACKSON
& W.F. CAROLIE B., ET AL.